

# Educators' Guide **FALL 2023**

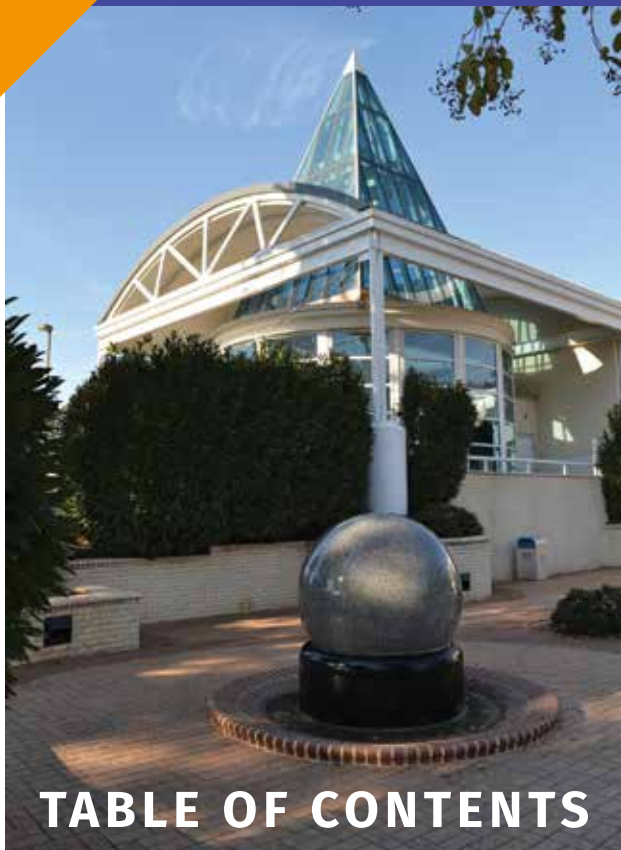
*Booking programs for August-December 2023*



Featuring programs correlated to the  
***North Carolina Standard Course of Study***  
and  
***North Carolina Foundations for Early Learning and Development***



# GENERAL INFORMATION



## TABLE OF CONTENTS

|                                      |   |
|--------------------------------------|---|
| Phone Number/Address/Hours.....      | 2 |
| Admission/Group Program Fees .....   | 3 |
| Reservations.....                    | 4 |
| Cancellations or Late Arrivals ..... | 4 |
| Dining.....                          | 4 |
| Kaleideum Gift Shop.....             | 4 |
| Accessibility Information .....      | 5 |
| Sanitation Protocols .....           | 5 |
| Tips for a Great Visit .....         | 5 |

|                         |     |
|-------------------------|-----|
| Education Programs..... | 6-7 |
|-------------------------|-----|

|                            |     |
|----------------------------|-----|
| Planetarium Programs ..... | 8-9 |
|----------------------------|-----|

|                            |    |
|----------------------------|----|
| Small Group Programs ..... | 10 |
|----------------------------|----|

|                             |    |
|-----------------------------|----|
| Exhibits at Kaleideum ..... | 11 |
|-----------------------------|----|

|                     |       |
|---------------------|-------|
| Program Chart ..... | 12-14 |
|---------------------|-------|

|   |    |
|---|----|
| Coming Soon:<br>Kaleideum Reimagined..... | 15 |
|---|----|



400 W Hanes Mill Road  
Winston-Salem, NC 27105

**Welcome Desk: (336) 767-6730**

**To book a field trip to Kaleideum:**

Email [scheduling@kaleideum.org](mailto:scheduling@kaleideum.org)

or

Submit [kaleideum.org/school-field-trip-form](https://kaleideum.org/school-field-trip-form)

## Kaleideum Hours

### SCHOOL YEAR

|                      |            |
|----------------------|------------|
| Monday .....         | Closed     |
| Tuesday-Friday ..... | 9 am-5 pm  |
| Saturday .....       | 10 am-5 pm |
| Sunday .....         | 1-5 pm     |

The Kaleideum Outdoor Park closes 30 minutes earlier than the museum each day.

*Kaleideum will be closed on specific holidays throughout the year. Please check [kaleideum.org](https://kaleideum.org) for the most up-to-date information.*





School Group Admission\*  
(per person)

Winston-Salem/Forsyth County

|   |      |
|---|------|
| School System Students .....            | Free |
| All other Forsyth County Students ..... | \$5  |
| Preschool Students .....                | \$5  |
| Out-of-County School Students .....     | \$7  |
| Teachers .....                          | Free |
| Adult Monitors** .....                  | Free |
| Bus Drivers .....                       | Free |

\*\*One free adult monitor per 10 students.  
**Adult monitors must be included in the initial reservation.** Additional parents and family members are welcome to visit the museum but will be required to pay full price and are not allowed into the group's scheduled educational programs or planetarium shows.

Group Program Fees  
(per person)

|  |     |
|--|-----|
| PreK-12 <sup>th</sup> Grade Programs ..... | \$6 |
| Planetarium Programs .....                 | \$6 |
| Laser Specials .....                       | \$3 |
| if added to another program .....          | \$2 |

Winston-Salem/Forsyth County

|                       |                                     |
|-----------------------|-------------------------------------|
| Title I Schools ..... | One free program per group per year |
|-----------------------|-------------------------------------|

Non-School Groups of 10 or More Admission\*  
(per person)

To ensure you receive this rate, please pre-register your group.

|                           |      |
|---------------------------|------|
| Ages 1 and up .....       | \$8  |
| 11 months and under ..... | Free |
| Bus Drivers .....         | Free |

\*NC sales tax included.  
Program fees are not taxed.



# PLANNING YOUR VISIT

## Reservations

Please make reservations at least **two weeks prior** to the requested date in order to ensure a greater number of program choices.

### To book a field trip to Kaleideum:

Please visit [kaleideum.org/field-trips](http://kaleideum.org/field-trips) to fill out and submit the online School Year Field Trip Registration Form. You will be contacted when your Registration Form is received.

If you have questions, please email [scheduling@kaleideum.org](mailto:scheduling@kaleideum.org) or call **(336) 767-6730**.

To assist with planning, educators are invited to visit Kaleideum **free of charge** with their valid teacher ID.

**Important!** Your field trip or group visit to Kaleideum is **not confirmed until you receive a confirmation letter**. Please bring this confirmation letter with you to present at the Welcome Desk on the day of your visit. **If you do not receive your letter within two weeks of booking your visit, please email [scheduling@kaleideum.org](mailto:scheduling@kaleideum.org).**

## Cancellations or Late Arrivals

Kaleideum strives to be flexible and accommodate changes in schedule; however, we appreciate as much advance notice as possible.

- If your group must cancel or reschedule your visit to Kaleideum, please call the Welcome Desk as soon as possible and provide at least 24 hours' notice in order to avoid a possible \$50 cancellation fee.
- If your group will not be arriving by your scheduled time, please call the Welcome Desk at (336) 767-6730.

A late arrival could result in shortened or canceled programs with no refund. Late entry to a planetarium program in progress is prohibited.

## Dining

You are welcome to bring bag lunches!

- FoodWorks is a spacious indoor dining area. Tables are first come, first served. To accommodate all visiting groups, lunch times will be limited to 30 minutes.
- All attempts will be made to schedule your lunch time prior to your arrival.
- An outdoor picnic area is available in front of the building and in the outdoor environmental park on a first come, first served basis.
- Drinks and snacks are available from vending machines.
- Kaleideum is convenient to many restaurants. Please inform the Welcome Desk at check-in if you are planning to have lunch delivered.

## Kaleideum Gift Shop

The Gift Shop features a wide array of fun and educational items to fit every budget and enhance your experience.

- Pre-packaged gift bags, a convenient way to save time and money, are available for \$3 each and contain a sampling of our most popular items. **Please request gift bags when you schedule your field trip.**
- For the convenience of all guests, we ask that no more than **12 students** visit the Gift Shop at one time and that adult monitors accompany students inside.
- **Teachers receive a 10 percent discount on Gift Shop items.**





## Accessibility Information

Kaleideum is committed to creating and sustaining a diverse, equitable, accessible, and inclusive learning environment. Kaleideum can accommodate a variety of accessibility needs.

- Kaleideum has dedicated accessible parking spaces.
- Kaleideum includes ramps to navigate between floors.
- Seating is available throughout the museum.
- Large restrooms are available for your comfort and convenience.
- Special lighting is available in the Kaleideum planetarium for sign language interpreters. Please inform us of this need in advance when you schedule your visit.
- Supplemental braille materials are available for the Kaleideum planetarium on request.
- The planetarium is ramped with accessible seating.
- Some planetarium shows contain strobe lighting and visual effects that could induce seizures.
- Sensory-friendly options are available upon request when museum attendance is light. During this time, children with autism spectrum disorder (ASD) and sensory processing differences can have a fun, enjoyable, and interactive learning experience in a comfortable, accepting, less stimulating environment.
  - A social narrative and visual schedule can help you and your students prepare for your visit to the museum.
  - Choice boards are available at the front desk and may make navigating the museum easier for students and caregivers alike.
  - Should the museum environment become over-stimulating, please request access to one of the quiet areas. These areas may not be available during peak attendance.
  - At the museum, learning can be verbal or non-verbal; hands-on or hands-off; fast or slow; social or solitary; loud or quiet; directed or inquiry-based.

## Sanitation Protocols

Our top priority is the safety and well-being of our guests, staff, and animals. Kaleideum continues to prioritize keeping the museum clean and disinfected.

## Tips for a Great Visit!

- We recommend allowing at least two hours to explore.
- Education programs are approximately 30-45 minutes long.
- Students must be monitored at all times.
- Food and drinks are allowed only in designated areas.
- Please don't feed any animals or tap on aquariums or enclosures.
- Scavenger hunts can be downloaded from our website.



# EDUCATION PROGRAMS

Education Programs are hands-on, interactive explorations for individual classes of approximately 25 students. Groups with fewer than 10 students, please refer to our Homeschool/Small Group Program section on page 10.

***For older grades and large groups, please ask about our Auditorium program options\*!***

## Greedy Triangle

### Grades PreK-K

What happens when a triangle gets tired of only having three sides and angles? In this storytime program, we'll practice counting and sequencing numbers 3-10, as well as identifying some familiar shapes and discovering new shapes together. We'll also create geometric works of art to bring home!

**North Carolina Foundations for Early Learning and Development**  
**North Carolina Standard Course of Study - NCES K.P.2.2; NCES.1.E.1**

## Shadows and Light

### Grades PreK-1

How does light affect the world around us? Explore the characteristics of light and shadow by listening to a story about shadows, creating shadow puppets and experimenting with light.



**North Carolina Foundations for Early Learning and Development**  
– LDC-1,3,8,11; CD-1,2,3; APL-1,2,3,5,6  
**North Carolina Standard Course of Study - NCES K.P.2.2; NCES.1.E.1**

## Sounds All Around

### Grades PreK-2

Let your class put their “good vibrations” to use! Take a musical adventure as we make some sounds of our own using traditional instruments and natural objects, all while discovering more about sound waves, the inner ear, and the ways in which we hear.

**North Carolina Foundations for Early Learning and Development**  
– APL-4; APL-5; ESD-2; ESD-5; LDC-1; CD-5  
**North Carolina Standard Course of Study – Music, Science: K-2 ML.1; K-2 ML.3; K-2 MR.1; 2.P.1**

## Fur, Feathers, Scale & Slime\*

### Grades K-2

Meet some of our animal ambassadors! We'll explore the differences in animal groups by examining fur, feathers, and scales, and



observe the unique characteristics of some of our favorite critters. In this exciting hands-on program, you'll have the opportunity to become an animal detective and decipher the life cycles of some common animals.

**North Carolina Foundations for Early Learning and Development**  
– APL-1; APL-2; ESD-5; LDC-2; LDC-3; CD-14; CD-15  
**North Carolina Standard Course of Study – Science: K.L.1; 1.L.1; 2.L.1**

## Changing Seasons\*

### Grades K-2

What will the weather be like today? Get weather-wise in this program as we investigate weather patterns, explore daily and seasonal changes, and learn how meteorologists use weather-measuring instruments.

**North Carolina Standard Course of Study – Science: K.E.1; 2.E.1**

## What's the Matter?

### Grades K-3

Solids, liquids and gases will be easy to identify after this exciting program. Students will take part in various station activities to learn the characteristics and reasons for changes in states of matter. Vocabulary builders and observational skills will be taught as we melt, sort, and balance our way through the states of matter.

**North Carolina Standard Course of Study – Science: K.P.2; 1.E.2; 2.P.2; 3.P.2.2**

*\* Auditorium Program option available.*

# EDUCATION PROGRAMS

## Magnificent Magnets

### Grade 1

Explore magnets and magnetic fields in this engaging hands-on program. A variety of station activities will allow students to examine properties of magnets and their ability to move objects without touching them.

**North Carolina Standard Course of Study – Science: 1.P.1**

## Marvelous Matter, Mixtures, and More

### Grades 3-5

Get exposed to the elements as we measure and mix to see and feel the differences between physical and chemical changes. Sharpen your observation skills and practice lab safety while we test chemical reactions to create fizzing, bubbling, and colorful concoctions.

**North Carolina Standard Course of Study – Science: 3.P.2.3; 4.P.2; 5.P.2.3**



## Energy Explorers

### Grades 4-6

Interactive demonstrations will showcase electricity and magnetism as two types of energy. Explore the difference between static and current electricity with a Van Der Graff generator, experiment with magnets to produce motion, and then engineer your own circuits to power a variety of motors and lights.

**North Carolina Standard Course of Study – 4.P.1; 5.P.1.1; 6.P.3.3**



## AUDITORIUM ONLY

### Science Extravaganza

#### Grades 3-6

Experience the wonders of chemistry, physics, and biology all in one program! Get blown away by the forces of chemical concoctions, be shocked with an amazing look at electricity, and meet one of our resident animals. Caution: we'll start things off with a bang!

**North Carolina Standard Course of Study – Science: 3.P.2; 3.P.3; 4.P.3; 4.L.1; 6.P.2**

## OFF-SITE PROGRAM

### Geology at Work

#### Grades K-6+

Immerse yourself in the dynamic world of geology at Vulcan Materials



Company's working quarry! Led by Kaleideum educators, students can view the quarry up close, and learn about the products mined here and the uses of these materials in everyday life. The Joseph A. Gutierrez Geology and Earth Science Museum at Vulcan also houses a large collection of gems and minerals, so students can dig deeper into the basic components of Earth's building blocks.

This program is fully sponsored by Vulcan Materials Company. Groups are encouraged to visit Kaleideum free of charge on the same day as their Geology at Work program.

**North Carolina Standard Course of Study – Science: K.P.2; 1.E.2; 4.P.2; 4.E.2; 6.E.2**



# PLANETARIUM PROGRAMS

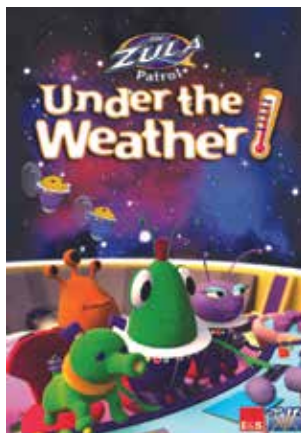
The Kaleideum planetarium is a multi-media theatre that seats 119. Inside the 50-foot dome, guests experience a realistic simulation of the night sky as observed from any place on Earth. Special effects, video images, and lighting are combined to enhance the overhead drama. Planetarium programs range from preschool to adult level. **School Group programs are for students, teachers, and adult monitors only.** Groups with fewer than 15, please email [scheduling@kaleideum.org](mailto:scheduling@kaleideum.org).

## Zula Patrol

### Grades PreK-2

When weather is stolen from the planets in our solar system, the Zula Patrol comes to the rescue! Learn about weather processes on Earth and on other planets in our solar system with the lovable gang of aliens called the Zula Patrol. This 23-minute movie covers the basics of weather on Earth and compares it with weather on other planets in our solar system.

**North Carolina Standard Course of Study – Science: K.E.1; 1.E.1; 2.E.1**

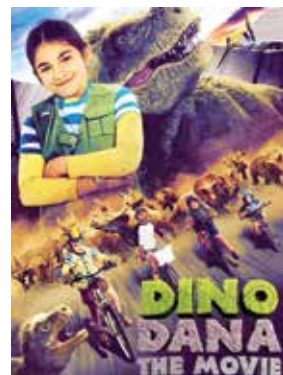


## Dino Dana: The Movie

### Grades 1-4

Dino Dana: The Movie finds 10-year-old Dana, who sees dinosaurs in the real world, completing an experiment that asks where all the kid dinosaurs are. To find the answer, Dana, her older sister Saara, and their new neighbors Mateo and Jadel go on a dinosaur journey bigger than anything Dana has ever faced before in this engaging 22-minute program.

**This program introduces students to the basics of the design process.**



## Follow the Drinking Gourd

### Grades 1-5+

A folk tale of an enslaved family who follows the Big Dipper north on a quest for freedom. Gaze upon the Big Dipper yourself with our full-dome night sky.

**North Carolina Standard Course of Study – Science, History & Culture: 1.E.1.1; 1.H.1.2; 2.C.1.2; 5.C.1.4**

## Solar System Tour

### Grades 1-6

Take the grand tour of our solar system! From the sun and planets to moons, dwarf planets, and more. Our planetarium educator will take you on a trip through space.

**North Carolina Standard Course of Study – Science: 1.E.1; 2.E.1.1; 3.E.1; 3.P.1; 4.E.1; 5.P.1; 6.E.1; EE.1.1.2; EE.1.1.3**

## Space in Motion

### Grades 2-6

Learn about the basics of astronomy as we explore rotations, revolutions, moon phases, and gravity of the planets in our solar system. See the Earth's rotation in action with our full-dome night sky! This program is customized for your age group.

**North Carolina Standard Course of Study – Science: 2.E.1.1; 2.E.1.3; 3.E.1; 3.P.1; 4.E.1; 5.P.1; 6.E.1**

## Earth, Moon & Sun

### Grades K-1

Explore the relationship between the Earth, Moon, and Sun within our solar system. Examine the Earth from the International Space Station, learn how gravity keeps us on Earth, how the Sun keeps us alive, and how everything moves together in this educational program for young astronomers.

**North Carolina Standard Course of Study – Science: 1.E.1**

## Astro Moose Goes to Space

### Grades K-3

An introduction to the Solar System for the young astronomer guided by a curious moose! Visit planets and witness the phases of the moon in this one-of-a-kind adventure.

**North Carolina Standard Course of Study – Science: 1.E.1; 2.E.1.1; 3.E.1; 3.P.1**





## Tour of the Seasons

### Grades 2-6

Discover why we have seasons on Earth and whether other planets have seasons. See how the stars appear to change throughout the winter, spring, summer, and fall with our full-dome night sky.

**North Carolina Standard Course of Study –**

**Science: 2.E.1.3; 3.E.1; 3.P.1; 4.E.1; 5.P.1; 6.E.1; EE.1.1**

## Carolina Skies

### Grades 3+

This live, interactive program explores the stars and constellations visible in North Carolina's night sky throughout the year.

**North Carolina Standard Course of Study –**

**Science: 3.E.1; 3.P.1; 4.E.1; 6.E.1**

## All About the Cosmos

### Grades 5+

Explore the solar system, black holes, dark matter, and energy as we journey through the cosmos in the Kaleideum planetarium.

**North Carolina Standard Course of Study –**

**Science, History: 5.P.1; 6.E.1; 6.P.1.2; 6.H.2.3;**

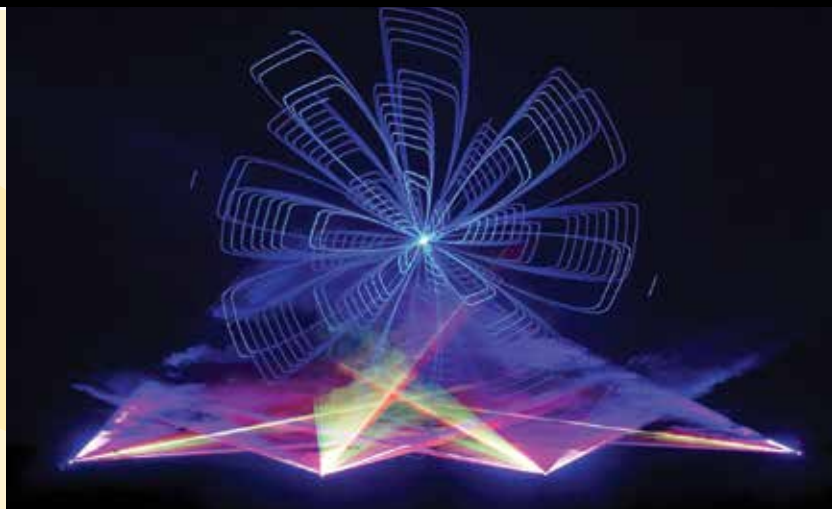
## Space Voyagers

### Grades 5+

Get an up-close look at the spacecrafts and missions that have opened humanity's window to the universe.

**North Carolina Standard Course of Study –**

**Science, History: 5.P.1; 6.E.1; 6.H.2.3**



## LASERS! LASERS! LASERS!

Go on an Immersive adventure with Kaleideum's laser light system. *Laser programs are not recommended for those with epilepsy, flicker vertigo, or other motion or light sensitivities.*

## The Great Space Chase

### All Ages

"It's an Intergalactic, Virtual-Reality Accelerator Suit. And it's been stolen!" Join Lt. Photeus as he tracks the sinister Captain Xenon through our Solar System. The Great Space Chase is a detective mystery, which teaches audiences about our solar system and the universe through laser animations. 25 minutes. \$6 per person.

## Laser Specials

### All Ages

Laser Specials can be booked for \$3 per person or added to another program for an additional \$2 per person. Laser Specials are 14 minutes long.

- **Laser Fun:** Celebration Medley; Jump, Jive, and Wail; ABC; William Tell Overture
- **Sci-Fi:** Imperial March; Mission Impossible; 1999; Ghostbusters
- **Space & Beyond:** The Planets; Animaniacs; The Conversation; Across the Universe; Astronomy Domine; Cotton Eye Joe
- **Stars and Stripes:** God Bless America; Star Spangled Banner; Standing Outside the Fire; Only in America; God Bless the USA
- **Halloween Fun:** Jaws; Monster Mash; Superstition; Addam's Family Theme; Time Warp; Ghostbusters
- **Winter Holiday Preview:** Rudolph the Red Nosed Reindeer; Most Wonderful Time of the Year; All I Want for Christmas Is You; Let It Go

# HOMESCHOOL/SMALL GROUP PROGRAMS



## **Fur, Feathers, Scale & Slime** **Tuesday, September 12**

### **Grades K-2**

Meet some of our animal ambassadors! We'll explore the differences in animal groups by examining fur, feathers, and scales, and observe the unique characteristics of some of our favorite critters. In this exciting hands-on program, you'll have the opportunity to become an animal detective and decipher the life cycles of some common animals.

- Program starts at 1:30 pm.
- Programs are limited to 20 students.
- Register by emailing [scheduling@kaleideum.org](mailto:scheduling@kaleideum.org) or calling (336) 787-6730.



## **Get Down in the Stream!** **Art and Nature at Reynolda with Kaleideum** **Tuesday, October 10**

REYNOLDA

### **All Ages**

Our home is your homeschool, too! Homeschool students and teachers are invited to visit Reynolda for science-, art-, and history-based learning. Kaleideum's science educators will offer hands-on learning in Reynolda's outdoor spaces. Learn about the ecosystem of Lake Katherine and the animals and plants native to the area; then make vegetable prints in the gardens. Participants are welcome to self-tour the museum while learning about the place and having conversations about the art. Download our free app, Reynolda Revealed, for more Reynolda stories before, during, and after your visit. Activities will take place primarily outdoors, weather permitting.

- Activities available 10 am-Noon and 1-3 pm. Reynolda House Museum of American Art is open 9:30 am-4:30 pm.
- \$10 per student ages 5-15 (Museum members or Friends of Reynolda Gardens at the Dual/Family level receive a 20 percent discount)
- One adult free per student ticket. Additional adults visiting the museum pay general admission (payable at time of visit; library passes and other free categories apply).
- Pre-registration required; contact **Julia Hood** at [julia@reynolda.org](mailto:julia@reynolda.org) with questions.



## **Marvelous Matter, Mixtures, and More** **Tuesday, November 14**

### **Grades 3-5**

Get exposed to the elements as we measure and mix to see and feel the differences between physical and chemical changes. Sharpen your observation skills and practice lab safety while we test chemical reactions to create fizzing, bubbling, and colorful concoctions.

- Program starts at 1:30 pm.
- Programs are limited to 20 students.
- Register by emailing [scheduling@kaleideum.org](mailto:scheduling@kaleideum.org) or calling (336) 787-6730.



# EXHIBITS at KALEIDEUM

**Students can also enjoy these exhibits at Kaleideum during their visit:**

## BioWorks

The BioWorks exhibit takes you from the tropical rainforests of South America to the fields of North America. Learn about conservation efforts on a local and global scale. This exhibit hall showcases a variety of live animals, including mammals, birds, reptiles, amphibians, fish, and invertebrates.

## Dino Discovery

Enter the world of the Mesozoic Era and come face to face with animatronic dinosaur models. Discover an armored Stegosaurus, a three-horned Triceratops and its young, and fearsome Albertosaurus. Spot the Pteranodon overhead. Take a photograph sitting on a Parasaurolophus. Examine both real and replica fossils, quiz yourself on prehistoric trivia, and become a paleontologist at the digital fossil dig.



## HealthWorks

Exhibits about human cells, DNA, and skeletal and muscular systems foster a greater understanding of the human body. A giant walk-in mouth and other components promote good dental hygiene.



## KEVAWorks

KEVA® planks are small, uniform blocks that allow guests to use “no glue, just gravity” to construct towers, bridges, animals, buildings, sculptures, or almost anything else they can envision. A variety of finished structures are on display in the exhibit to inspire young and old alike as they work together or independently to build their creations.



## KidsWorks

Science activities for the youngest museum guests include soft play blocks, puzzles, puppets, a sensory bin, and books. The country barn with puppets encourages imaginative play.

## North Carolina: Mountains to the Sea

This gallery reflects the geological and biological diversity of North Carolina, from the mountains to the piedmont and coastal plain. Walk inside a 20-foot tree to see the concentric rings; climb up through the inside and slide back down to the bottom! Younger children can practice fishing in the simulated stream. Guests can examine rock and mineral collections and search for North Carolina plants and animals artistically rendered in the giant mural. Adjacent to the “North Carolina: Mountains to the Sea” exhibit is the Science Lab featuring mounted displays of animals from around the world, fossil samples, skulls, shell collections, and many more natural science artifacts.



## Outdoor Science and Environmental Park

This area explores simple machines, sound, and energy on a large scale. Giant bat ears enable students to listen like a bat and understand echolocation and sound waves. There is also a fossil dig for younger guests, a rain garden, physics playground, and a climbing wall. Take a leisurely walk through the winding trails of the Environmental Park, a 15-acre outdoor natural science exhibit. Visit Kaleideum’s Pollinator Garden while you explore native plant life and a display of common herbs. The park offers a great contrast between North Carolina’s native species and habitats.



## PhysicsWorks

This interactive exhibit hall demonstrates principles of motion, forces, and simple machines. Learn about light, color, and optics in the Captured Shadow room, and see and feel how a gyroscope works and affects movement and balance.

## MindWorks

Test your ability to solve puzzles. Interact with a variety of brain teasers that help improve your problem-solving skills.

## SoundWorks

You’ll hear it before you see it! Make your own music while learning about sound waves, vibrations, and the science of sound as you experience thunder drums, a walk-on piano, the invisible harp, and more.



# Standard Alignment Guide

|      | Forces and Motion<br>(K.P.1; 1.P.1; 2.P.1; 3.P.1;<br>4.P.1; 5.P.1; 6.P.1)  | Matter: Properties<br>and Change<br>(K.P.2; 2.P.2; 3.P.2; 5.P.2; 6.P.2)   | Energy: Conservation<br>and Transfer<br>(3.P.3; 4.P.3; 5.P.3; 6.P.3)   |
|------|--|---|--|
| PreK | Shadows and Light   p. 6<br>Sounds All Around   p. 6   | Shadows and Light   p. 6<br>Sounds All Around   p. 6<br>Greedy Triangle   p. 6  |  |
| K    | Shadows and Light   p. 6<br>Earth, Moon, and Sun   p. 8<br>Astro Moose   p. 8  | Shadows and Light   p. 6<br>Sounds All Around   p. 6<br>Greedy Triangle   p. 6<br>What's the Matter?   p. 6<br>Geology at Work   p. 7 ● | <div> <span>●</span> Homeschool/Small Group program available<br/> <span>●</span> Off-Site program<br/> <span>●</span> Planetarium laser show<br/> <span>●</span> Auditorium only </div> |
| 1    | Magnificent Magnets   p. 7<br>Earth, Moon, and Sun   p. 8<br>Astro Moose   p. 8  |   |  |
| 2    | Sounds All Around   p. 6<br>Astro Moose   p. 8   | What's the Matter?   p. 6   |  |
| 3    | Astro Moose   p. 8<br>Tour of the Seasons   p. 9<br>Solar System Tour   p. 8<br>Space in Motion   p. 8<br>Carolina Skies   p. 9<br>The Great Space Chase   p. 9 ●<br>Science Extravaganza   p. 7 ●   | What's the Matter?   p. 6<br>Marvelous Matters, Mixtures, and More   p. 7, 10 ●<br>Science Extravaganza   p. 7 ●                        | Marvelous Matters, Mixtures, and More   p. 7, 10 ●<br>Science Extravaganza   p. 7 ●  |
| 4    | Energy Explorers   p. 7<br>Science Extravaganza   p. 7 ●   | Marvelous Matters, Mixtures, and More   p. 7, 10 ●<br>Geology at Work   p. 7 ●  | Marvelous Matters, Mixtures, and More   p. 7, 10 ●<br>Science Extravaganza   p. 7 ●  |
| 5    | Tour of the Seasons   p. 9<br>Solar System Tour   p. 8<br>Space in Motion   p. 8<br>Space Voyagers   p. 9<br>All About the Cosmos   p. 9<br>Energy Explorers   p. 7<br>Science Extravaganza   p. 7 ● | Marvelous Matters, Mixtures, and More   p. 7, 10 ●<br>Science Extravaganza   p. 7 ●   | Marvelous Matters, Mixtures, and More   p. 7, 10 ●<br>Science Extravaganza   p. 7 ●  |
| 6    | All About the Cosmos   p. 9<br>Energy Explorers   p. 7<br>Science Extravaganza   p. 7 ●  | Science Extravaganza   p. 7 ●   | Marvelous Matters, Mixtures, and More   p. 7, 10 ●<br>Energy Explorers   p. 7<br>Science Extravaganza   p. 7 ●   |
| 12   |  |   |  |

|  | <b>Earth Systems, Structures and Processes</b><br>(K.E.1; 1.E.2; 2.E.1; 5.E.1; 4.E.2; 6.E.2)   | <b>Earth and Universe</b><br>(1.E.1; 3.E.1; 4.E.1; 6.E.1)  |
|--|--|--|
|  | Zula Patrol: Under the Weather   p. 8  | Shadows and Light   p. 6   |
|  | Changing Seasons   p. 6<br>Zula Patrol: Under the Weather   p. 8   | Astro Moose   p. 8   |
|  | Zula Patrol: Under the Weather   p. 8<br>What's the Matter?   p. 6<br>Geology at Work   p. 7 ●   | Earth, Moon, and Sun   p. 8<br>Astro Moose   p. 8<br>Solar System Tour   p. 8<br>Follow the Drinking Gourd   p. 8<br>The Great Space Chase   p. 9 ●  |
|  | Changing Seasons   p. 6<br>Zula Patrol: Under the Weather   p. 8<br>Astro Moose   p. 8<br>Tour of the Seasons   p. 9<br>Solar System Tour   p. 8<br>Space in Motion   p. 8<br>The Great Space Chase   p. 9 ● |  |
|  |  | Astro Moose   p. 8<br>Tour of the Seasons   p. 9<br>Solar System Tour   p. 8<br>Follow the Drinking Gourd   p. 8<br>Space in Motion   p. 8<br>Carolina Skies   p. 9<br>The Great Space Chase   p. 9 ●                              |
|  | Geology at Work   p. 7 ●   | Tour of the Seasons   p. 9<br>Solar System Tour   p. 8<br>Follow the Drinking Gourd   p. 8<br>Space in Motion   p. 8<br>Carolina Skies   p. 9<br>The Great Space Chase   p. 9 ●  |
|  | Tour of the Seasons   p. 9   | <div data-bbox="1149 1514 1528 1738"> <ul style="list-style-type: none"> <li>● Homeschool/Small Group program available</li> <li>● Off-Site program</li> <li>● Planetarium laser show</li> <li>● Auditorium only</li> </ul> </div> |
|  | Geology at Work   p. 7 ●   | Tour of the Seasons   p. 9<br>Solar System Tour   p. 8<br>Space in Motion   p. 8<br>Carolina Skies   p. 9<br>Space Voyagers   p. 9<br>All About the Cosmos   p. 9  |

**CHART CONTINUES  
ON NEXT PAGE**

|      | Ecosystems<br>(1.L.1; 4.L.1; 5.L.2)          | Structures and Functions<br>of Living Organisms<br>(K.L.1; 1.L.1; 2.L.1) |
|------|--|--|
| PreK |  | Sounds All Around   p. 6   |
| K    | Fur, Feathers, Scale, and Slime   p. 6, 10 ● | Sounds All Around   p. 6<br>Fur, Feathers, Scale, and Slime   p. 6, 10 ● |
| 1    | Fur, Feathers, Scale, and Slime   p. 6, 10 ● | Fur, Feathers, Scale, and Slime   p. 6, 10 ●                             |
| 2    | Fur, Feathers, Scale, and Slime   p. 6, 10 ● | Sounds All Around   p. 6<br>Fur, Feathers, Scale, and Slime   p. 6, 10 ● |
| 3    |  | Science Extravaganza   p. 7 ●  |
| 4    | Science Extravaganza   p. 7 ●                | Science Extravaganza   p. 7 ●  |
| 5    | Science Extravaganza   p. 7 ●                |  |
| 6    |  |  |
| 14   |  |  |

● Homeschool/Small  
Group program available  
● Auditorium only



# Coming Soon! The Reimagined Kaleideum™



**In early 2024, the reimagined Kaleideum will open at 120 West Third Street in the heart of downtown Winston-Salem.**

At five stories and nearly 70,000 square feet with an expansive rooftop, the building is inspired by the geometric forms and triangulated shapes captured in a kaleidoscope and grounded in the idea of experiencing spaces and places from diverse perspectives.

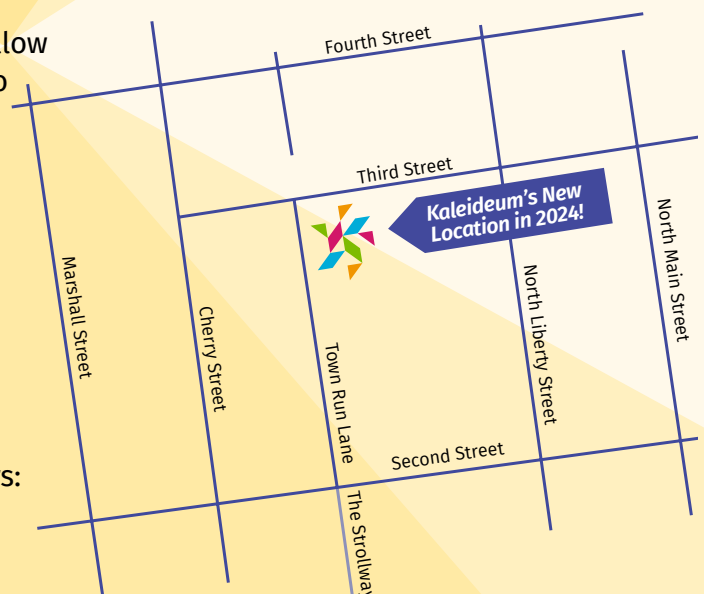
Throughout the new exhibitions, Kaleideum invites the community to take on the role of both artist and scientist to explore the places where STEM, arts, and literacy overlap. Exhibits are hands-on and open-ended so that each visit brings something new to create or discover.

Kaleideum has planned nine exhibitions that allow for multiple types of engagement and appeal to visitors of any age or developmental stage.

- By Design
- In Motion
- Digital Dome
- Our Nature
- Storytelling
- Wonders of Water
- Try It! Studio
- Little Learners
- Rooftop Adventure

Follow us on Facebook and sign up for our email newsletter to follow the excitement as the building takes shape, and the opening nears:

[kaleideum.org/e-newsletter-sign-up-form/](https://kaleideum.org/e-newsletter-sign-up-form/)



***Book your spring field trips beginning November 1.***



400 W Hanes Mill Road  
Winston-Salem, NC 27105



Non Profit Org.  
U.S. Postage

**PAID**

Permit No. 193  
Winston-Salem, NC

kaleideum.org



# KALEIDEUM iNVENTION CONVENTION

WHERE YOUNG INVENTORS GET THEIR START

**A COMPETITION AMONG REGIONAL STUDENTS, GRADES K-5.**

Kaleideum Invention Convention seeks to inspire and empower the next generation of innovators by partnering with North Carolina schools and organizations to cultivate the skills, confidence, and culture students need to successfully engage in problem solving and design thinking.

For information about how to participate, please contact  
Maddy Carlson at [mcarlson@kaleideum.org](mailto:mcarlson@kaleideum.org).

Presenting Sponsor:



**Collins Aerospace**